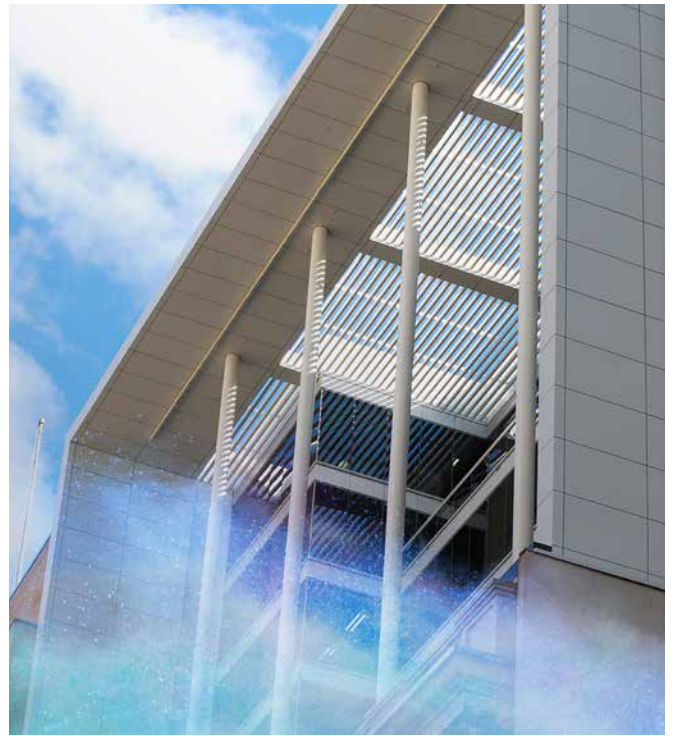


Colors and trends for the world's finest creative minds



D1036 Metallic Shades



SWC39N (Metro Gold)
Matt



SW10AN (RAL 9006)
Satin



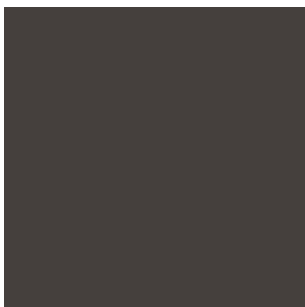
SW26AN (Eco Grey)
Matt



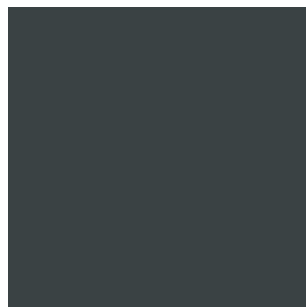
SW17AN (RAL 9007)
Satin



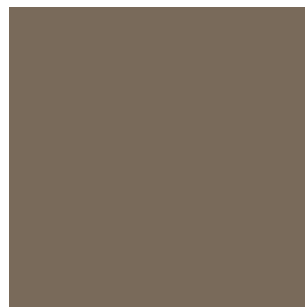
SW326N (Sparkle Grey)
Fine Texture



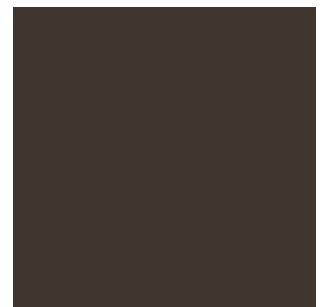
SW31BN (2900 MT Grey)
Fine Texture



SW324N (Noir 2200 Sable)
Fine Texture



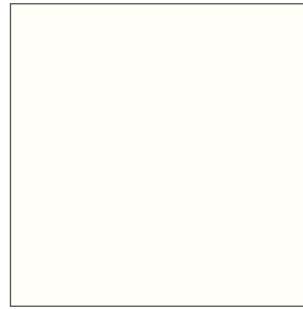
SW30BN (2500 MT Grey)
Fine Texture



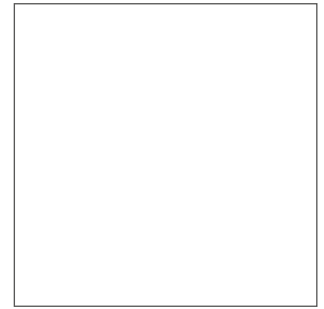
SW28BN (Anodic Bronze III)
Matt

D1036

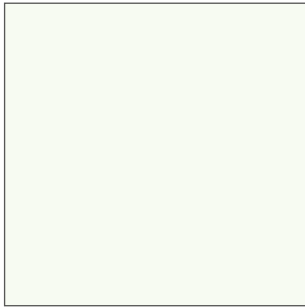
Solid Shades



SC18AN (RAL 9016)
Satin



SC19AN (RAL 9003)
Satin



SC17AN (RAL 9010)
Satin



SC11AN (RAL 9002)
Satin



SDA53N (Champagne)
Matt



SP12AN (RAL 7035)
Satin



SP12CN (RAL 7032)
Satin



SP100N (RAL 7037)
Satin



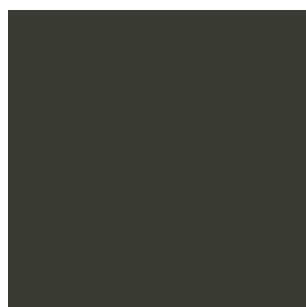
SP294N (RAL 7043)
Matt



SP203N (RAL 7015)
Matt



SP223N (RAL 7024)
Matt



SP15AN (RAL 7022)
Satin



SP18AN (RAL 7016)
Satin



SP338N
Fine Texture



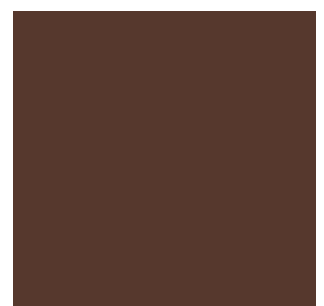
SN25AN (RAL 9005)
Matt



SN333N (RAL 9005)
Fine Texture



SM13AN (RAL 8003)
Satin

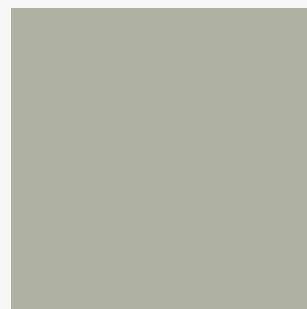


SM226N (RAL 8016)
Matt

D2525

Bonded Metallic Shades

Our special breakthrough bonding technique is unique to AkzoNobel in India. It significantly improves the luster and finish of our premium special effect metallic powder coatings to deliver even greater color consistency and performance, while avoiding the picture frame effect when applied. As a powder coating, Interpon is free from VOCs, and any overspray can be reclaimed and reused, further improving its sustainability credentials for those seeking to create impressions and futures that endure.



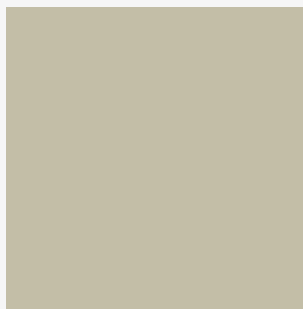
Y2208N (Soft Silver)
Matt



Y2220N (Steel Blue Platinum)
Matt



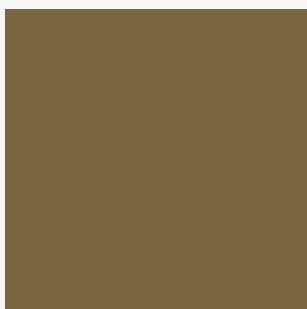
Y2219N (Steel Blue Grey 715)
Matt



Y2204N (Silver Champagne)
Matt



Y2206N (Gold Splendor)
Matt



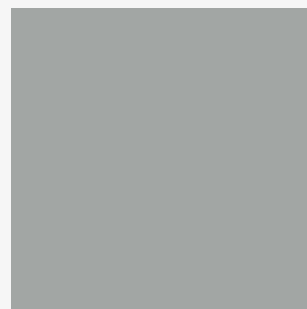
Y2218N (Steel Bronze-1)
Matt



Y2200N (Golden Beach)
Matt



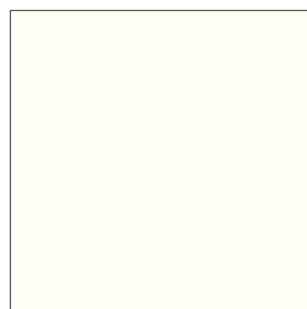
Y2103N (Golden Bronze)
Satin



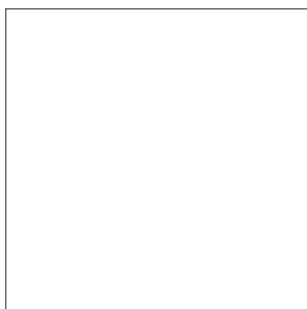
YW15FN (RAL 9006)
Satin (Dry Blended Metallic)

D2525

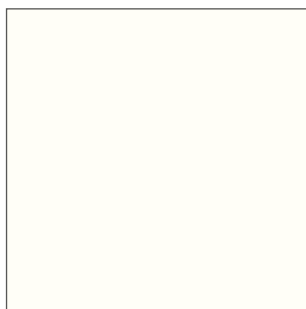
Solid Shades



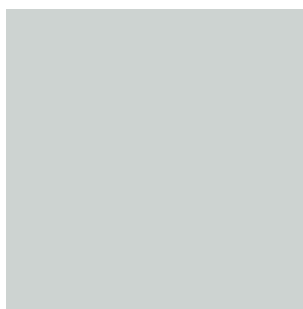
YCB18N (RAL 9016)
Satin



YC19AN (RAL 9003)
Satin



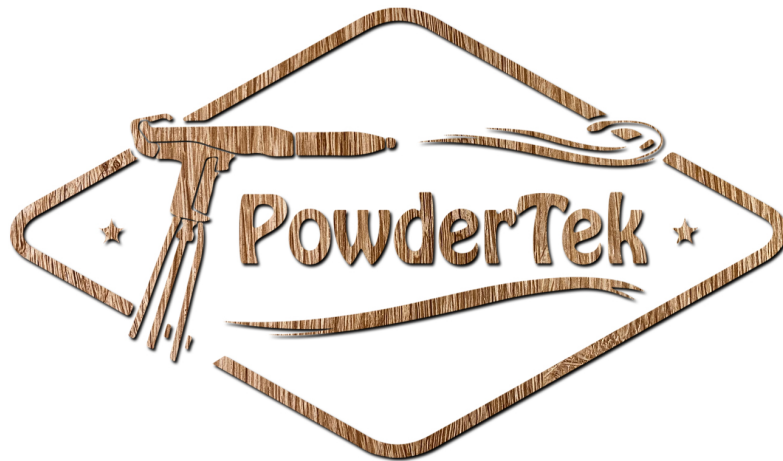
YCA87N (RAL 9010)
Satin




YPD78N (RAL 7035)
Matt



YPB24N (RAL 7043)
Matt



 **Registered Office and Unit-1**
A-18/A, Naraina Industrial Area, Phase-1,
New Delhi-110028, India

Unit-2
Sampla-Beri Road, Kultana Ismaila Street, District Rohtak
Haryana-124501, India

 **011-41411141, 011-47050181-83**

 **+91-9811173861, +91-7770888666**

 **info@powdertek.in**

 **www.powdertek.in**